

BROMOBENZENE

PRODUCT IN FOCUS



Bromobenzene

INTRODUCTION

Bromobenzene, an aryl halide, is a clear, colorless liquid with a pleasant odor. It is soluble in methanol and diethyl ether, and very slightly soluble in cold water.

It is used as a solvent and reactant in organic synthesis and agrochemical intermediate.

Manufacture

Bromobenzene is prepared industrially by the action of bromine on benzene in the presence of iron powder.

Synonyms	Monobromobenzene Bromobenzol Phenyl bromide
-----------------	---

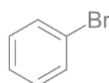
CAS no.	108-86-1
----------------	----------

EINECS no.	203-623-8
-------------------	-----------

Molecular formula	C_6H_5Br
--------------------------	------------

Molecular weight	157.01
-------------------------	--------

Structure	
------------------	---



Applications

- ✔ Bromobenzene is used to introduce a phenyl group via palladium-catalyzed coupling reactions such as the Suzuki reaction
- ✔ It is used for organic synthesis, especially in the production of the synthetic intermediate phenyl magnesium bromide (a Grignard reagent)
- ✔ Also used in production of following intermediates
 - Phenylsilane
 - p-Terphenyl
 - 4-Bromobenzenesulphonamide
 - 4-Bromonitrobenzene
- ✔ It is used as a precursor in the manufacture of Phencyclidine
- ✔ Bromobenzene is also used as an additive to motor oils and as a crystallizing solvent

BROMOBENZENE

PRODUCT IN FOCUS



SPECIFICATIONS

Test	Unit	Specification
Appearance @ 25 °C	-	Clear colorless liquid
Identification (IR spectrum)	-	To conform to the standard
Analysis by GC (By Area normalization % m/m)		
Bromobenzene	% w/w	Min 99.5
Benzene	%	Max 0.2
Di Bromobenzene	%	Max 0.05
Moisture content	% w/w	Max 0.1
Specific gravity	-	1.47 to 1.50

STORAGE

Keep container tightly closed in a dry and well-ventilated place. Keep away from heat and sources of ignition.

PACKING

50 kg & 250 kg UN approved HDPE drum.

REACH Status

Not registered yet.

No matter the quantity you need, our exceptional quality and service will make ExSyn your supplier of choice! If you need any additional information or SDS, please contact us.